

ALL CAMERAS ON DECK

A citizen science project investigating the interaction between dolphins, porpoises, and vessels in North East England.



We invite you to submit videos you have captured of dolphins & porpoises in North East England to help us learn more about these animals in our region.

Learn more and submit your videos here:



www.allcamerasondeck.wordpress.com

ABOUT THE PROJECT

What is the study?

Citizen science project led by the Marine MEGAfauna Research Lab at Newcastle University.

Aims to increase our understanding of interactions between cetaceans (dolphins, porpoises and whales) with vessels.



What is the Marine Megafauna Lab?

Interdisciplinary group of researchers based at Newcastle University.

Conducts problem solving research on porpoises, dolphins, whales, sharks, rays and seals in the North Sea and internationally.

Assesses marine megafauna populations, identifies and mitigates threats.

How can you get involved?

We invite you to submit videos you have captured of cetaceans, with and without vessels.

Videos can be recorded from the shore, air, or at sea.

Videos will then be analysed by the team at the Marine MEGAfauna Lab to improve our understanding of cetacean behaviour.



Learn more and submit your videos here:



www.allcamerasondeck.wordpress.com

RESPONSIBLE CETACEAN WATCHING

Part 1



Signs of cetacean disturbance may include:

- Tail slaps
- Diving or surfacing less
- Sudden movements or flight behaviour
- Bunching together

If you observe any signs of disturbance, you should move away and wait for the animals to move on.

Cetaceans are protected species

under the Conservation of Offshore Marine Habitats and Species Regulation 2017, Conservation of Habitats and Species Regulation 2017, and Wildlife and Countryside Act 1981.

It is a legal offence to disturb dolphins, porpoises, and whales in UK waters.

If you observe cetacean disturbance in action call 999. If the event has already happened call 101.

At Sea:

- Do not actively pursue animals
- When animals approach and are bowriding, vessels should not increase their speed or change course
- Do not swim with, touch, or feed cetaceans
- When using a commercial wildlife watching vessel, you should consider looking for an accredited wildlife safe operator such as a member of the WiSe Scheme (www.wisescheme.org).

Members of this scheme follow a code of conduct which includes staying 100m from animals, avoiding mothers and young, and switching engines to neutral if animals approach the boat.



RESPONSIBLE CETACEAN WATCHING

Part 2



On Shore:

While you are unlikely to be in direct contact with cetaceans from viewpoints on shore it is still important to respect the wildlife which lives on shore, including birds and seals (which are also protected from disturbance under the Wildlife and Countryside Act 1981).

- Keep to marked paths where available
- Pass wildlife slowly and cautiously
 - Avoid surrounding any animals
 - Do not touch or feed any animals
- Take extra care during breeding seasons when animals are particularly sensitive to disturbance
 - Keep dogs under close control
 - Do not leave litter

Useful links:

Marine and Coastal Wildlife Code (Defra)
<https://www.gov.uk/government/publications/marine-and-coastal-wildlife-code>

WiSe Scheme (www.wisescheme.org)

Civil Aviation Authority
(register-drones.caa.co.uk)



From the Air:

- When using a drone, you must hold the relevant flyer ID and operator ID documents. It is against the law to fly drones without the required IDs.
- You must also always follow the Civil Aviation Authority Drone and Model Aircraft Code.
- If you observe any signs of disturbance you should move the drone away from the animal(s).
- We recommend you should not fly lower than 30m above the animal(s)

Learn
more and
submit your
videos here:



www.allcamerasondeck.wordpress.com

SUBMISSION GUIDELINES



Video footage

Cetaceans with or without vessels
Try to keep both the animal(s) and vessel(s) in frame

The longer the better

Try to record the encounter for 5mins or more

Recorded in North East England
(Berwick-upon-Tweed to Scarborough)

Animal(s) must be visible surfacing
at least twice

Record the date, time and location

Digital camera
or smart phone

Download or
request a copy of the
Encounter Logbook to
help keep track of
the date, time and
location



Photos (still images)

No animal(s) visible

Very shaky or blurry footage

Recorded outside of North
East England

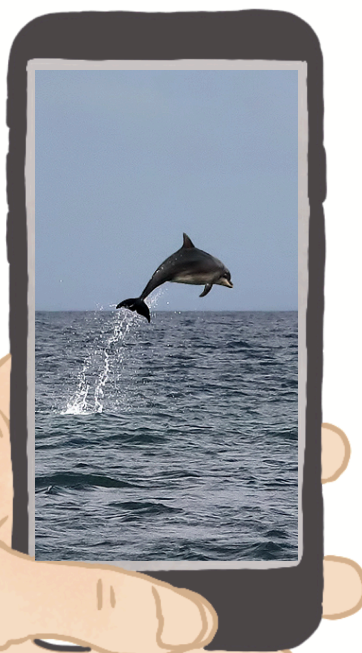
Learn
more and
submit your
videos here: www.allcamerasondeck.wordpress.com



HOW TO SUBMIT

General Advice

1 Record



videos and location of observations



what3words can be used to note your location either on-site or retrospectively at [what3words.com](https://www.what3words.com)

2 Quality check

your videos to ensure they meet the submission guidelines



3 Submit

your videos using our submission portal

Submit here:



www.allcamerasondeck.wordpress.com



HOW TO SUBMIT

Ad Hoc Submissions Using the Google Form Part 1

Submit here:



www.allcamerasondeck.wordpress.com

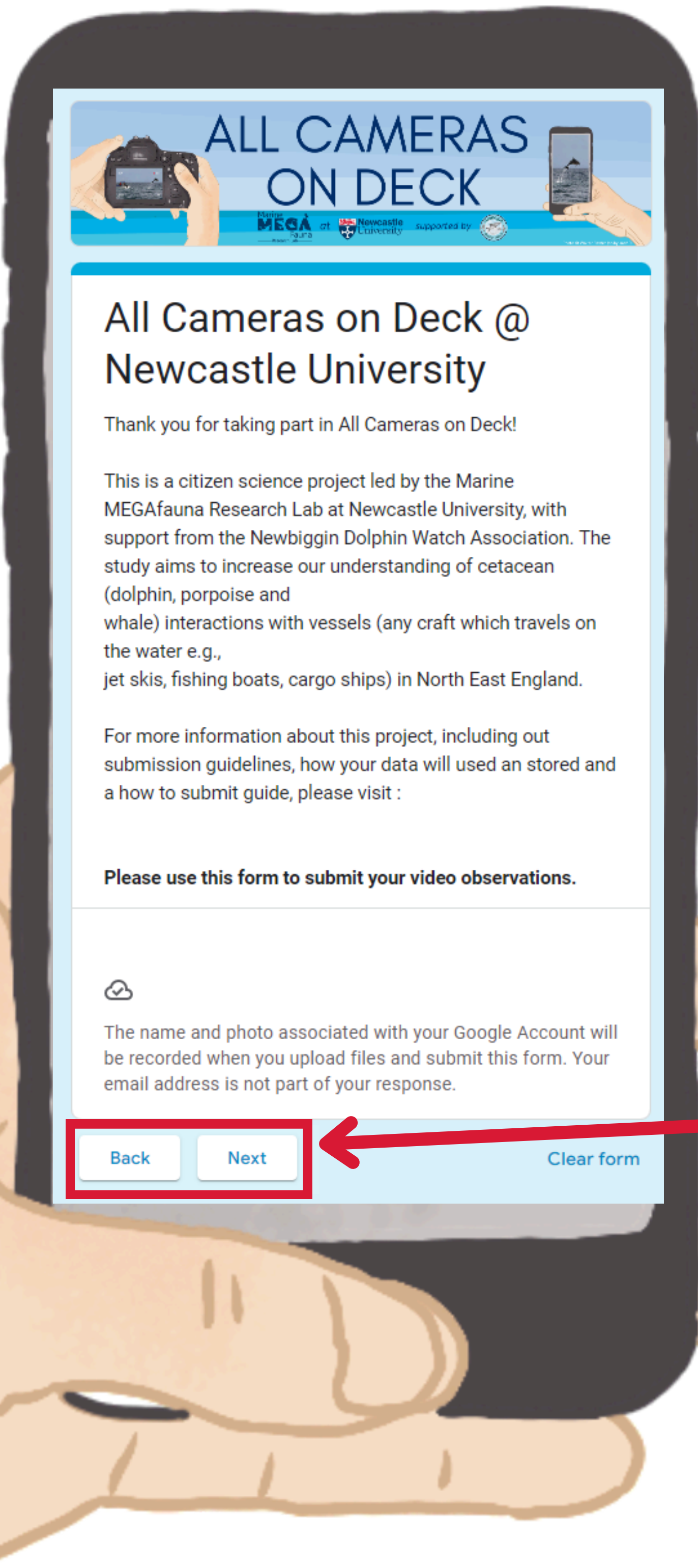
You can access the form on your **mobile** or **computer**.

Top tip: access the form on the same device you have your video saved to.

There are three sections to the form:

- 1 Introduction and Data Management Agreements
- 2 Video Observation Upload
- 3 Optional Updates and Project Promotion

Use the "Back" and "Next" button to navigate through the form



HOW TO SUBMIT

Ad Hoc Submissions Using the Google Form Part 2

In section 3 you should click on the "Add File" button

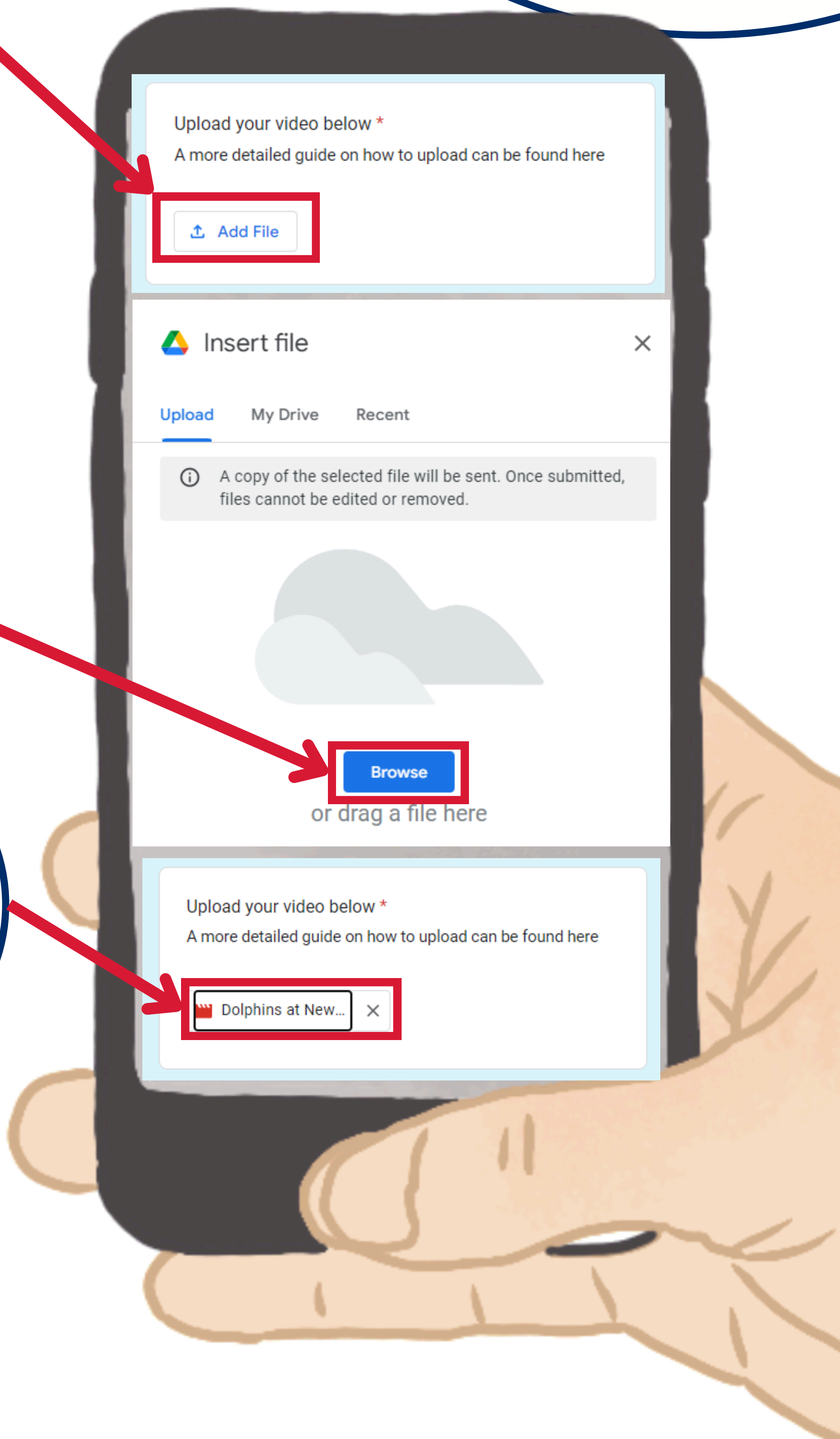
This will open a file upload option. Select "Browse" to locate the video file on your device.

Once uploaded, you should see your file in the form

In the final section press

Submit

to submit the video to the project



HOW TO SUBMIT

Mass Submission

Submit
here:



www.allcamerasondeck.wordpress.com

Do you regularly
record cetaceans?
or
Do you have a large
collection of videos?

What is the
mass submission service?

This is for large collections of videos or those who regularly video record cetaceans

It is a participant-led service, where we will work with you to find what arrangement works best for you.

It usually involves meeting with the team and transferring the videos to our hard drive - avoiding the need to upload large collections using the online portal.



THE FINE PRINT

Lead researcher(s):

Sarah Dickson, PhD Student
s.dickson2@ncl.ac.uk

Professor Per Berggren
per.berggren@ncl.ac.uk

Marine MEGAfauna Lab
School of Natural & Environmental Sciences
Ridley Building 2
Newcastle University
NE1 7RU

Who is funding the research?

This project is funded by the Engineering and Physical Sciences Research Council (EPSRC) and the Natural Environment Research Council (NERC) as part of research undertaken through the Aura Centre for Doctoral Training. Find out more about the wider project here: <https://tinyurl.com/t3d8639t>

Has this research got ethical approval?

This research project has been approved by Newcastle University's Ethics Committee (ID 1043)

Are there any risks associated with taking part?

Participation is fully voluntary, any video recordings are made at your own risk.

How will my data be managed and stored?

Marine MEGAfauna Lab researchers will use the information you provide including location, observation details and video files (as well as optional details such as your email addresses) in order to undertake this research project and will act as the data controller for the project. This means we are responsible for looking after your information and using it properly. Your data will be collected using google forms and stored on google drive cloud storage.

Your rights to access, change or move your information are limited, as we need to manage the information in specific ways so that the research is reliable and accurate. If you withdraw from the study, we will keep the observational data (including video recordings) that you have already submitted but will delete any personal information. Personal information (contact details) will be used to contact you with project updates (should you opt in). This data will only be accessible by members of the Marine MEGAfauna Lab at Newcastle University. Any personal information will be removed 5 years after the completion of the study.

Video recordings, observational data and location will all be linked and used in the analyses of this project. This data will be stored long-term and may be shared with other researchers for other research projects as Newcastle University and in other organisations.

Others will not have access to any information that identifies you. For more information on your GDPR rights please visit <https://www.ncl.ac.uk/research/researchgovernance/ethics/gdpr/>.

Who should I contact about any concerns I have with this project?

Please first contact the lead researchers, if you feel comfortable doing so. Alternatively, you should contact Newcastle University Ethics Committee (res.policy@ncl.ac.uk).

Thank you for participating in
All Cameras on Deck



—Research Lab—



supported by

